

**PRINTeL'S FIRST ANNUAL TEACHING & LEARNING FORUM**

# How the numbers of the online quizzes changed since the pandemic situation

**Margarida Amaral, Hugo Ribeiro**  
Educational Technologies / University of Porto

May 2021



Co-funded by the  
Erasmus+ Programme  
of the European Union



# Agenda

- ▶ Fully online T&L request different approaches from teachers, students and staff.
- ▶ Not all teachers and students were prepared for such a quick change.
- ▶ Universities were forced to define and intensify strategies to help and enhance e-learning literacy throughout their academic community.
- ▶ **Distance learning** became the main solution for education during COVID-19 pandemic.

# Background

- ▶ Long tradition on pen and paper
- ▶ Mixed processes on different Faculties
- ▶ Change resistance
- ▶ Prejudice against MCQ
- ▶ Major moment in students' lives
- ▶ High stakes exams since 2007 on computer



## The Main Goal:

High stake exams using a computer in a  
**safe and stress free** environment

**U.PORTO**

UNIVERSIDADE DO PORTO  
TECNOLOGIAS  
EDUCATIVAS

# ET unit tasks:

- ▶ Designing the exam
  - ▶ Types of questions
  - ▶ Best practices
- ▶ Quiz Development
- ▶ Preparation and communication
- ▶ Remote / local support during assessment
- ▶ Results analysis

# Designing the exam

- ▶ Questions types
- ▶ Migration VS Transformation
- ▶ Training on Multiple Choice Questions





# Quiz Development

- ▶ LMS interface or alternatives
- ▶ Configuration
- ▶ Settings revising





- Dashboard
- Curso teste 20/21
- Course Management
- Participants
- Grades
- Download center
- General**
- Topic 1
- Trabalhos
- Teste 1 (2020-10-31)
- Topic 4
- Comunicação e interação
- Topic 6
- Topic 7
- NÃO APAGAR!!!
- Topic 9
- Topic 10

Name Example Quiz

What type of quiz is this?  Distance  In classroom

Description

Display description on course page

### Timing

Check scheduled tests

Open the quiz       Enable

Close the quiz       Enable

Time limit  minutes  Enable

Number of participants

# Preparation and communication

- ▶ Procedures and explanations
- ▶ Assessment model
- ▶ Credentials and logins
- ▶ Single sign-on



The screenshot displays the login page for the U.PORTO system, titled 'Autenticação e Autorização'. It offers two primary authentication methods:

- Initial session with password:** This section includes a 'Utilizador' (User) field, a 'Palavra-passe' (Password) field, and a blue 'Iniciar sessão' (Log in) button. Below the fields are links for 'Esqueceu o seu nome de utilizador?' and 'Problemas de acesso?'. At the bottom of this section, there are two checkboxes: 'Não guardar informação de utilizador de sessão' and 'Permitir a utilização automática de dados de informação para este serviço'.
- Initial session with CMD or CC:** This section explains that users can log in using a 'Chave Móvel Digital (CMD)' or 'Cartão de Cidadão (CC)'. It features the 'União Móvel' logo and a blue button labeled 'Chave Móvel Digital / Cartão de Cidadão'. A link 'Saiba mais sobre a Chave Móvel Digital' is also present. Below the button is a link for 'Problemas de acesso?'.

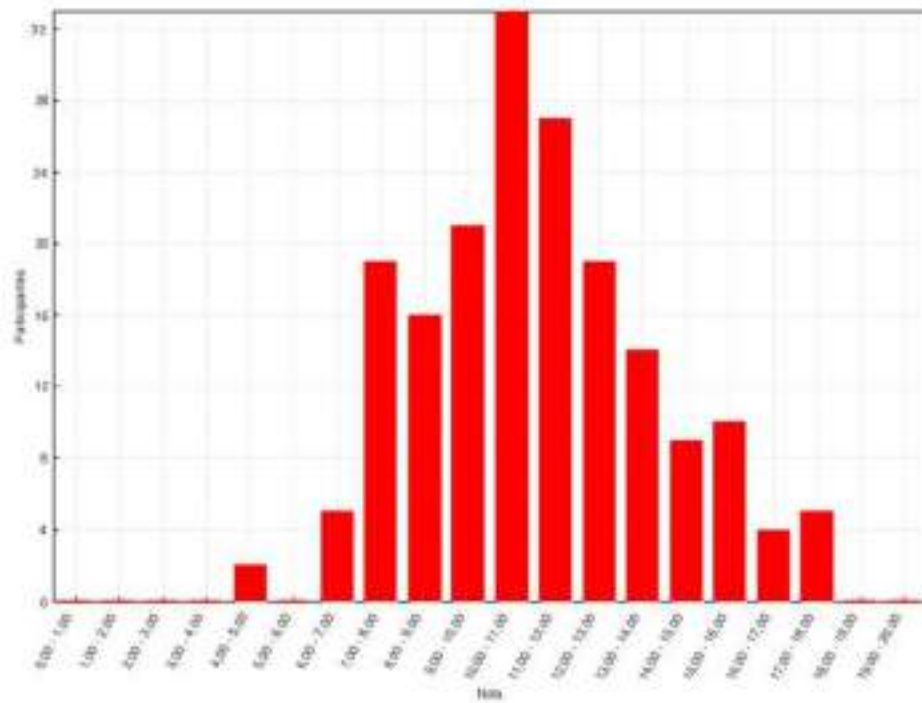
# Remote / local support

- ▶ Instructions
- ▶ Credentials and logins
- ▶ Stress management
- ▶ Foreign students
- ▶ Students with special needs

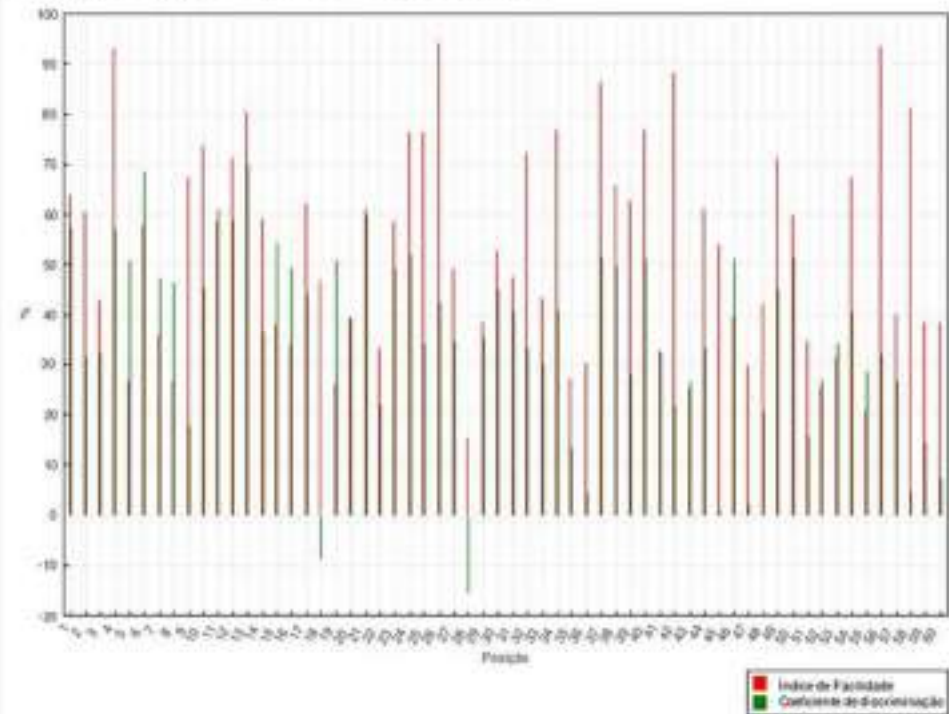


# Results analysis

Distribuição de classificações



Estadística para as posições da pergunta



# Training

- ▶ All training actions moved to **webinar format**, open to the entire U.Porto teaching community, with **no limit of participants neither registration**.
- ▶ **Six trainers conducted 107 webinars** from March 2020 to March 2021.
  - ▶ 27 webinars - computer-based exams
    - ▶ For teachers
    - ▶ For local support teams
- ▶ Personalized individual online meetings (zoom) – pedagogical and technical consultancy



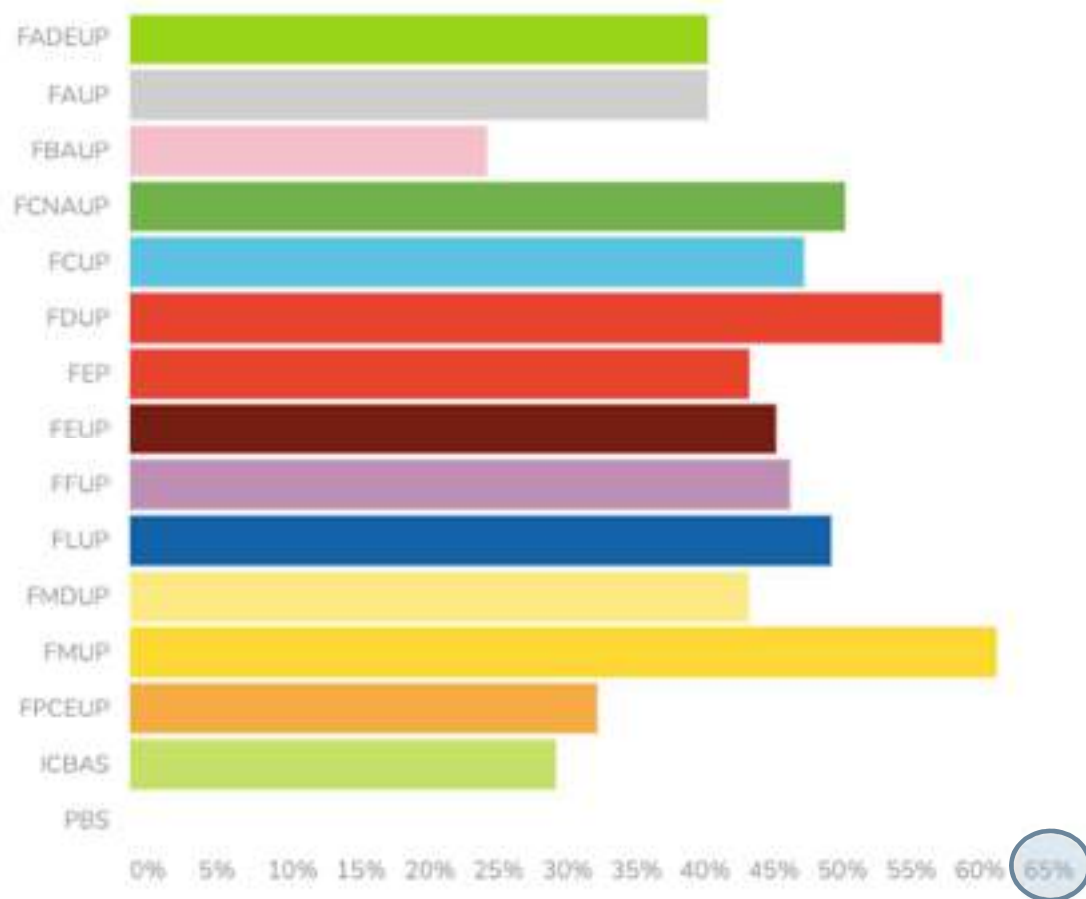
# Fraud Prevention

- ▶ Proper time limit
- ▶ Effective on-site proctoring
- ▶ Identity control



# What about now?

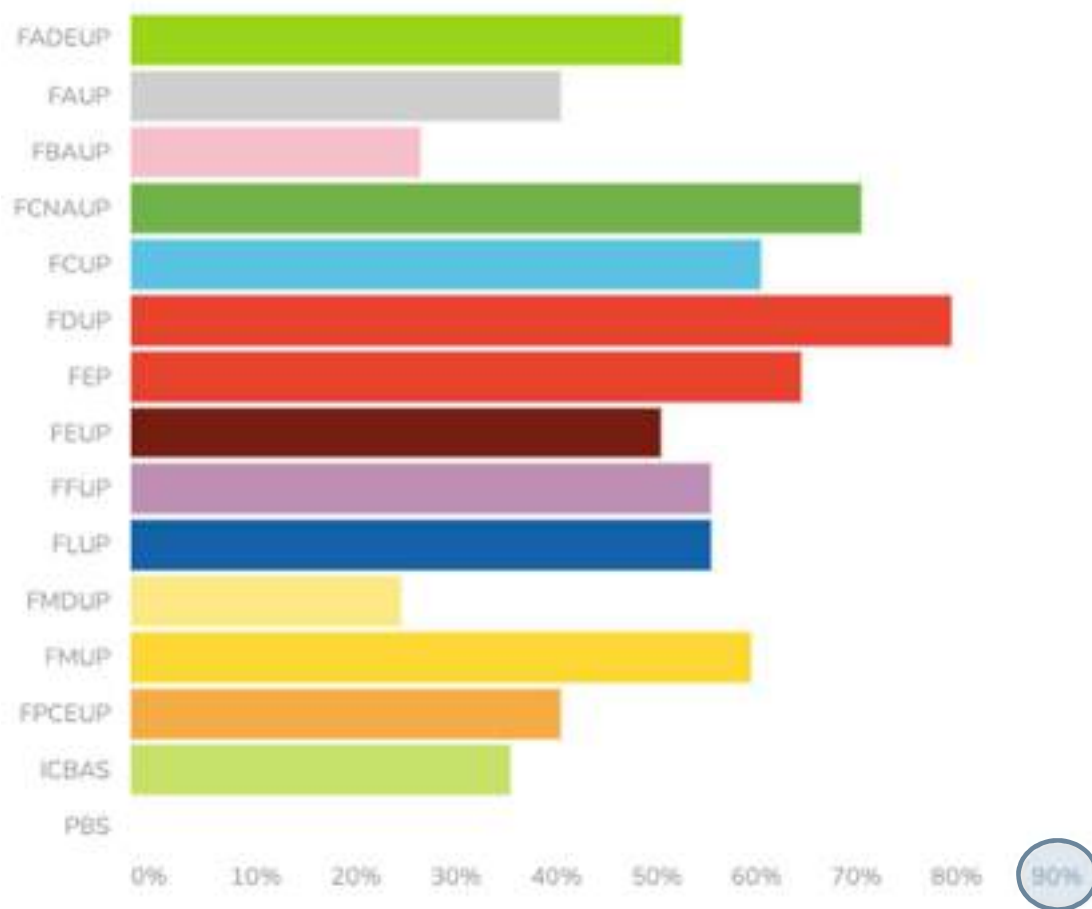
% of courses on Moodle U.Porto – 2019/2020





# What about now?

% of courses on Moodle U.Porto – 2020/2021



# Are quizzes here to stay?

**2019/2020**

- ▶ **3925 courses**
- ▶ 6408 quizzes
  - ▶ **3008** formative assessment
  - ▶ **3400** summative assessment
  - ▶ **554** in Faculties' computer rooms / **89** with Educational Technologies Support

**U. PORTO**

UNIVERSIDADE DO PORTO  
TECNOLOGIAS  
EDUCATIVAS

# Are quizzes here to stay?

**2020/2021**

- ▶ **4493 courses**
- ▶ 8050 quizzes
  - ▶ **2546** formative assessment
  - ▶ **5504** summative assessment
  - ▶ **826** in Faculties' computer rooms / **0** with Educational Technologies Support

**U. PORTO**

UNIVERSIDADE DO PORTO  
TECNOLOGIAS  
EDUCATIVAS

# They stay. What about now?

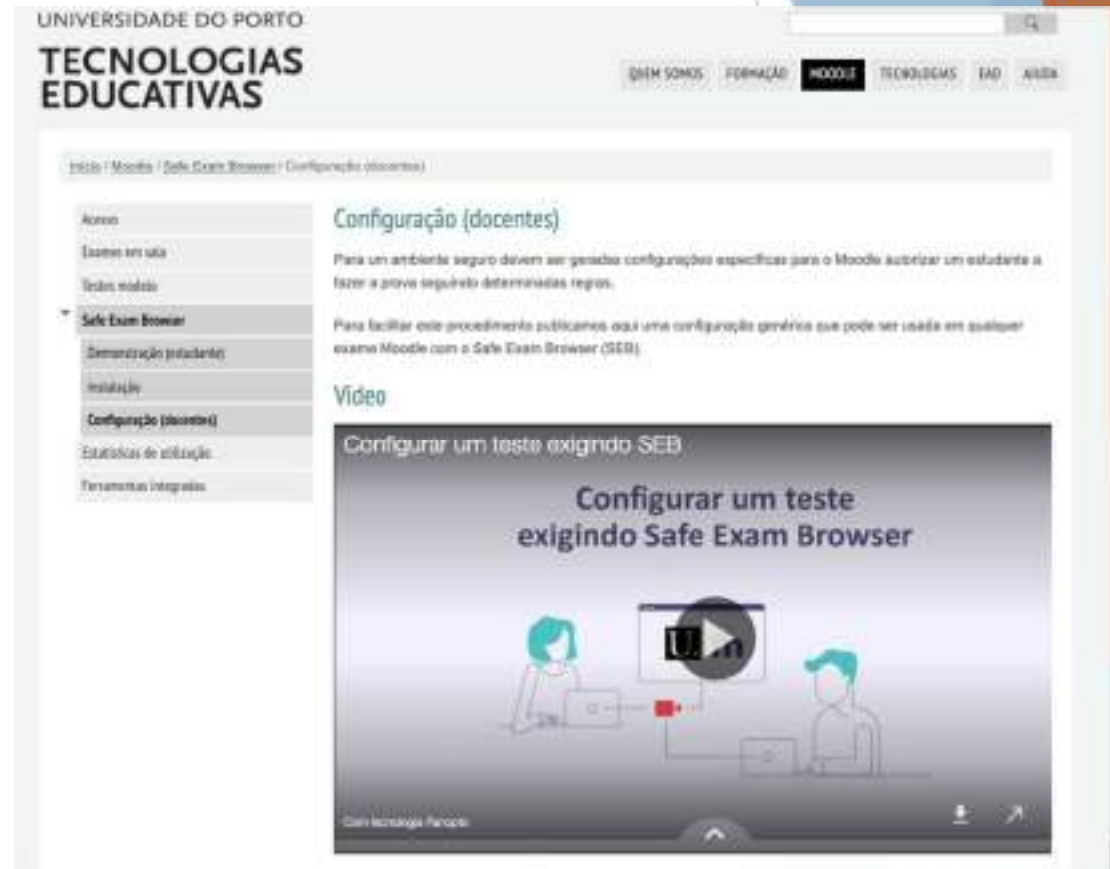
## New challenges

- ▶ **e-Assessment using BYOD: a response ?**
  - ▶ Equally safe environment;
  - ▶ Assuming the risks;
  - ▶ Working with local IT support.



# Safe Exam Browser

- ▶ Kiosk mode;
- ▶ No URL bar;
- ▶ Applications management;
- ▶ Network management;
- ▶ Moodle integration;
- ▶ Token by exam;
- ▶ Start/exit passwords.



The screenshot shows the Moodle interface for configuring the Safe Exam Browser (SEB) for teachers. The page is titled "UNIVERSIDADE DO PORTO TECNOLOGIAS EDUCATIVAS" and includes a navigation menu with options like "INFORMAÇÃO", "FORMAÇÃO", "MOODLE", "TECNOLOGIAS", "TAD", and "Ajuda". The breadcrumb trail is "Início / Moodle / Safe Exam Browser / Configuração (docentes)".

**Configuração (docentes)**

Para um ambiente seguro devem ser geradas configurações específicas para o Moodle autorizar um estudante a fazer a prova segundo determinadas regras.

Para facilitar este procedimento publicamos aqui uma configuração genérica que pode ser usada em qualquer exame Moodle com o Safe Exam Browser (SEB).

**Vídeo**

Configurar um teste exigindo SEB

Configurar um teste exigindo Safe Exam Browser

The video thumbnail shows two people at computers with a play button icon, illustrating the configuration process.

# BYOD as a response: challenges and doubts

- ▶ Personal laptop mandatory?
- ▶ Wifi availability.
- ▶ Students failing to follow.
- ▶ Given instructions
- ▶ Ease the logistic burden.



## BYOD as a response: conclusions

- ▶ Student/computer ratio will probably remain the same;
- ▶ Safe Exam Browser it's free, covers our needs, integrated with LMS;
- ▶ Versatile (AKA lot's of options);
- ▶ Ability to control applications and URLs;
- ▶ Institution needs to offer alternative;

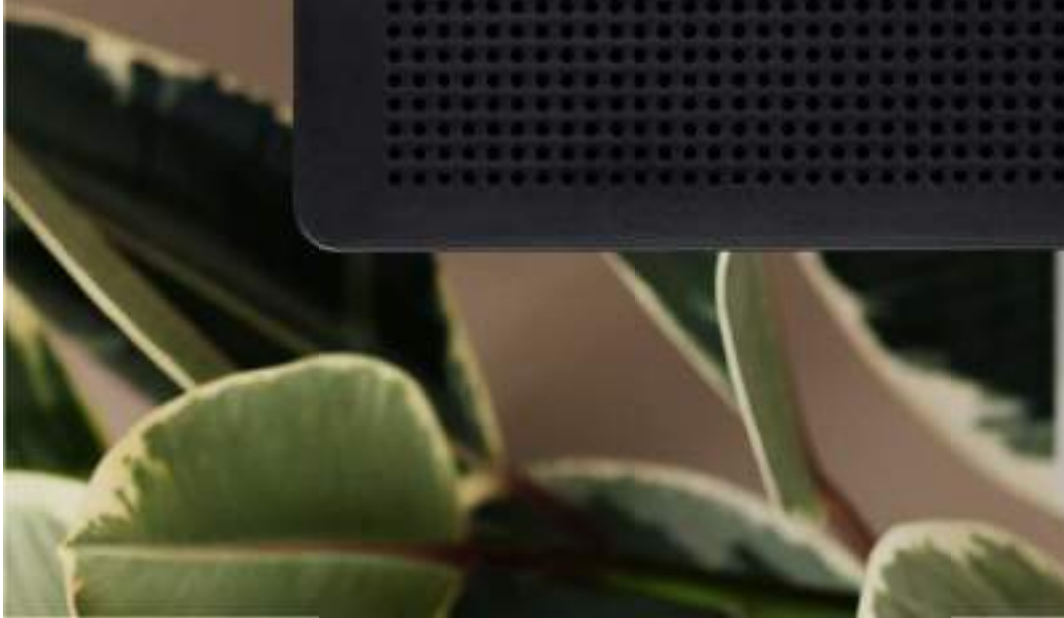




# Conclusions

- ▶ Different pedagogical and technical approaches to T&L and to assessment
  - ▶ Demands a flexible support and quest for versatile solutions
- ▶ The sudden shift to online had an impact in computer-based assessment practices
- ▶ Numbers suggest that those practices are here to stay
- ▶ Training and support are fundamental to the success of any change inserted in current practices
- ▶ Continuous search for integrated, reliable and trustworthy solutions

LIFE  
BEGINS  
AFTER  
COFFEE





**PRINTeL'S FIRST ANNUAL TEACHING & LEARNING FORUM**

**Thank you!**

**Margarida Amaral - [mamaral@uporto.pt](mailto:mamaral@uporto.pt)**

**Hugo Ribeiro – [hribeiro@uporto.pt](mailto:hribeiro@uporto.pt)**